

# USED PARTS FROM TRUMPF TruLaser 3040 L32



**TRUMPF ID  
0359329**



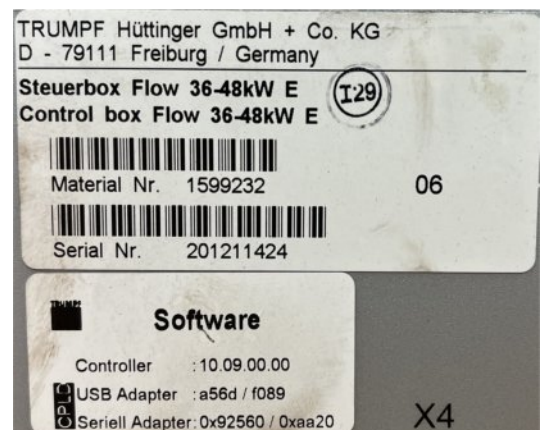
**TRUMPF ID  
0386831**



**TRUMPF ID  
1840039**



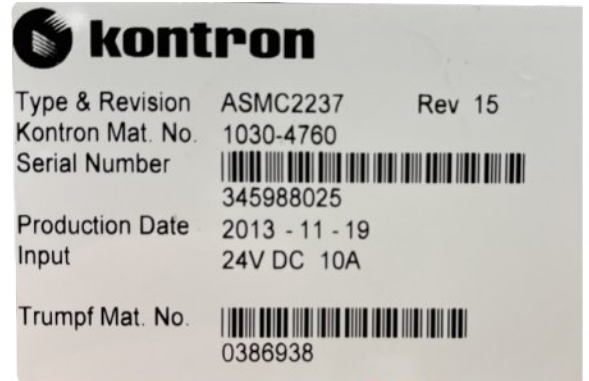
**TRUMPF ID  
1599232**



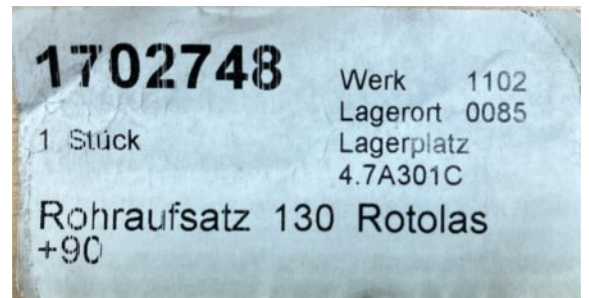
# USED PARTS FROM TRUMPF TruLaser 3040 L32



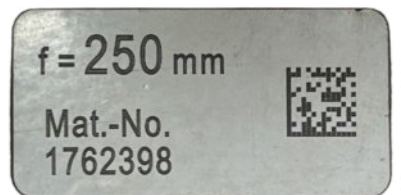
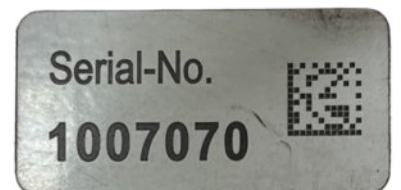
**TRUMPF ID  
0386938**



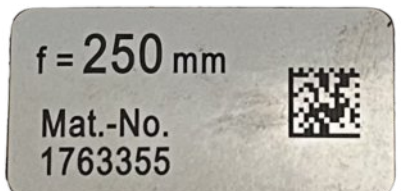
**TRUMPF ID  
1702748**



**TRUMPF ID  
1762398**

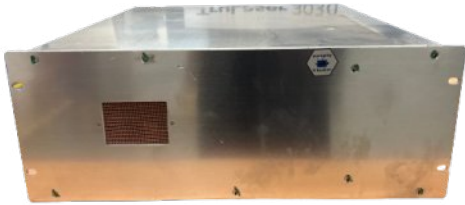


**TRUMPF ID  
1763355**





# USED PARTS FROM TRUMPF TruLaser 3040 L32



**TRUMPF ID  
1760569**

TRUMPF Hüttinger GmbH + Co. KG  
D - 79111 Freiburg / Germany

HF-Treiberstu 650W13,56MHzCLAS E UL VPE  
RF driver amplifier 650W 13,56MHz E UL

Material Nr. 1760569

136

02

Serial Nr. 201211475



**TRUMPF ID  
Unknown**

QT40.241 Power Supply

Input: 3AC 380-480V (-15% +20%); 1.8-1.3 A;  
50-60Hz

Output: DC 24-28V; 40-34 3A continuous  
DC 24-28V; 60-51 5A for 4 seconds  
Factory set: 24 1V

Operational temp. range: -25 to +60 deg C  
Installation by professional personnel only.  
Do not use without protective earth.  
Do not open, risk of electrical shock.  
Read QT40 instruction manual.

PULS GmbH  
Arabellastrasse 15  
81925 Muenchen  
www.pulspower.com

Designed in Germany  
Assembled in Czech Republic  
Label-Nr. 374 920 00F

UL US E137006  
Level 5

UL US LISTED  
IND. CONT. EQ.

Class I Div 2, T3  
Groups A, B, C and D  
182790

PSL  
SEMI FAT

-WARNING - DO NOT OPERATE VOLTAGE  
ADJUSTMENT OR S/P-JUMPER IN AN AREA  
WHERE AN EXPLOSIVE ATMOSPHERE  
MAY BE PRESENT



**TRUMPF ID  
Unknown**

SL5.601

Power Supply

Input: 3AC 400-500V (+15%); 0.6A/Phase  
50-60Hz

Output: DC 30 5V / 4A  
Cont. Power: 120W; Peak power: 144W

Installation by professional personnel only.  
Do not use without protective earth.  
Do not open, risk of electrical shock.  
Read instruction manual.  
Operational temperature range: -10 to +60 deg C

Designed in Germany  
Assembled in Czech Republic  
www.pulspower.com

Label-Nr.  
314 920 21C

UL US LISTED  
IND. CONT. EQ.  
E137006  
Level 3

UL US

CE

Complies to  
IEC 60950-1  
EN 50178  
EN / IEC 60204-1  
EN 61558-2-17  
FCC Part 15



**TRUMPF ID  
Unknown**

UL US  
LISTED  
IND. CONT. EQ.  
THDB

AS-i + : 30V (9W)  
AS-i - : 0V

Bihl+Wiedemann  
www.bihl-wiedemann.com

Bihl+Wiedemann GmbH  
Floßwörthstraße 41  
D-68199 Mannheim

Art.No: BWU2702

AS-i 3.0 PROFIBUS Gateway  
2 Master with 1 power supply, duplicate  
address recognition and AS-i inspector,  
integrated Safety Monitor (32 release circuits)

SERIAL NO:

YoC: 2013

0213480288540042

CE

Date: 25.11.13

Ident.No: 15233

Safety Version: V4.3

AS-i  
SAFETY 27002

# USED PARTS FROM TRUMPF TruLaser 3040 L32



**TRUMPF ID  
Unknown**



**TRUMPF ID  
Unknown**



**TRUMPF ID  
Unknown**



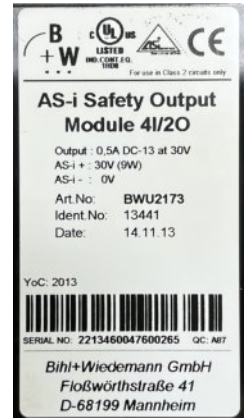
**TRUMPF ID  
Unknown**



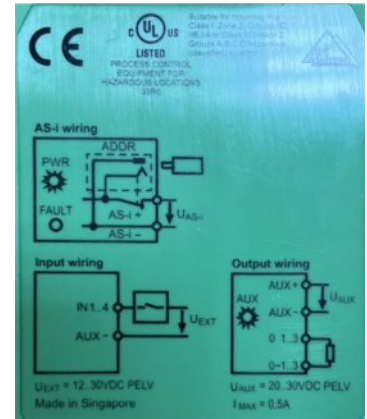
# USED PARTS FROM TRUMPF TruLaser 3040 L32



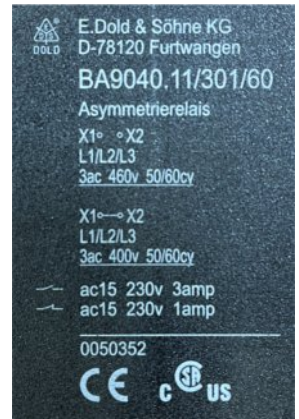
**TRUMPF ID  
Unknown**



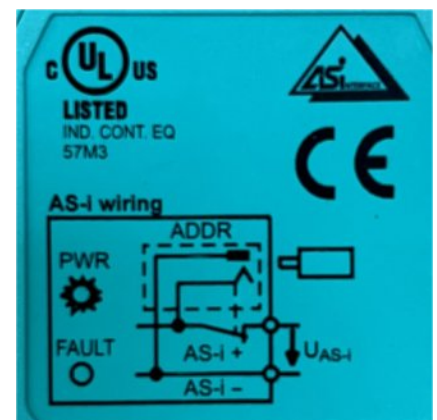
**TRUMPF ID  
Unknown**



**TRUMPF ID  
Unknown**



**TRUMPF ID  
Unknown**



# USED PARTS FROM TRUMPF TruLaser 3040 L32



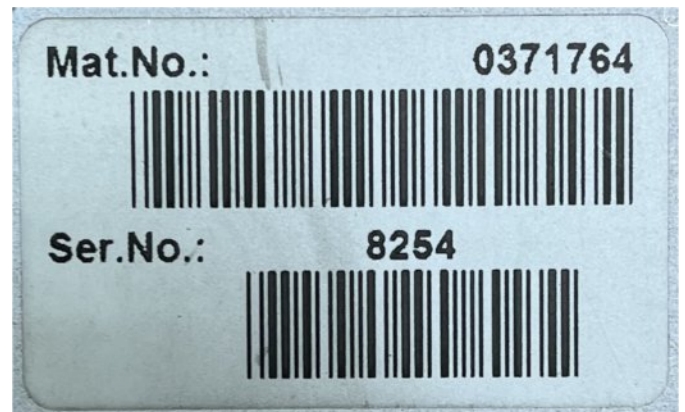
**TRUMPF ID**  
**Unknown**



**TRUMPF ID**  
**Unknown**



**TRUMPF ID**  
**0371764**



**TRUMPF ID**  
**0364735**



# USED PARTS FROM TRUMPF TruLaser 3040 L32



**TRUMPF ID**  
**Unknown**



**TRUMPF ID**  
**Unknown**



**TRUMPF ID**  
**Unknown**



**TRUMPF ID**  
**Unknown**



# USED PARTS FROM TRUMPF TruLaser 3040 L32



**TRUMPF ID  
Unknown**



**TRUMPF ID  
Unknown**



**TRUMPF ID  
Unknown**



**TRUMPF ID  
Unknown**

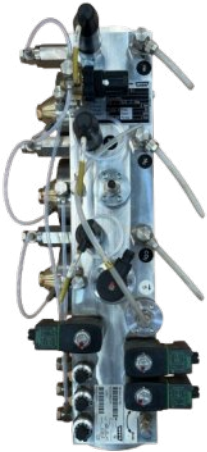




# USED PARTS FROM TRUMPF TruLaser 3040 L32



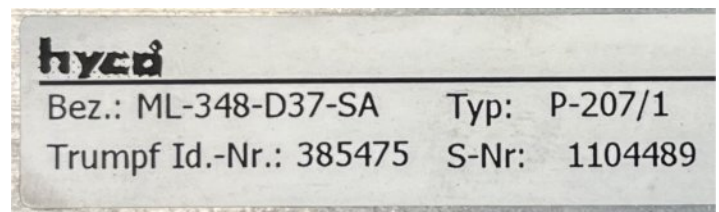
**TRUMPF ID**  
**Unknown**



**TRUMPF ID**  
**0146805**



**TRUMPF ID**  
**385475**



**TRUMPF ID**  
**0364737**



# USED PARTS FROM TRUMPF TruLaser 3040 L32



**TRUMPF ID  
0378615**



**TRUMPF ID  
0355219**



**TRUMPF ID  
1800987**



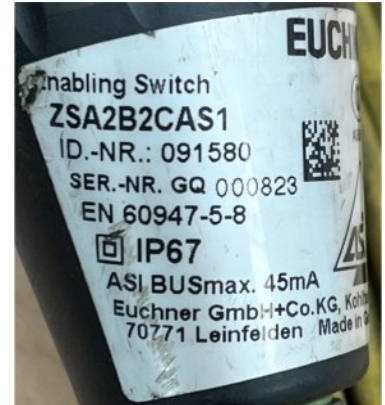
**TRUMPF ID  
0364944**



# USED PARTS FROM TRUMPF TruLaser 3040 L32



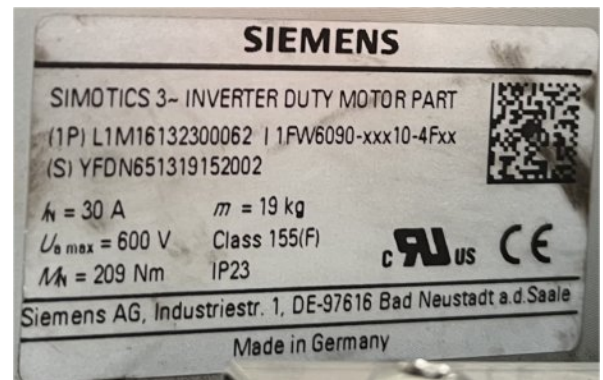
**TRUMPF ID  
091580**



**TRUMPF ID  
1573696**



**TRUMPF ID  
Unknown**



**TRUMPF ID  
1799294**



# USED PARTS FROM TRUMPF TruLaser 3040 L32



**Sender &  
Receiver  
Posts**



**Machine  
Levelling  
Foot**



**Mirror &  
Pedestal  
Posts**

